



Troy is a concept of remarkable simplicity and comfort that gives shape to practically endless possible variations, playing on the use of different materials, combinations and seat types. This vast and various assortment with over thousand possible combinations of materials (from plywood to polycarbonate to polypropylene, to upholstered, etc.), structures (in steel tube or steel rod, with legs, on wheels, on star base, etc., also available with arms), and colours (from

pastels to the brightest shades) offers solutions for every possible need for both the home and the contract sector.



Designer in Magis

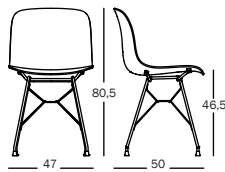


**Troy** — design Marcel Wanders, 2015  
Technical Sheet

**Chair**

**Material:** frame in steel rod (gold or copper coated) or painted in polyester powder. Seat in beech plywood (with or without pattern on the back side), in polycarbonate, in polypropylene or in polypropylene covered in fabric (Kvadrat "Divina"). Also available with front side covered in fabric (Kvadrat "Divina", "Steelcut Trio" or "Steelcut 2") or in leather.

Magis logo is stamped on each product of our collection vouching for their originality.



**Example of composition**



Frame: Copper  
Seat: White 1735 C



Frame: Gold  
Seat: Black 1763 C



Frame: White 5110  
Seat: White 1735 C



Frame: Black 5140  
Seat: Black 1763 C

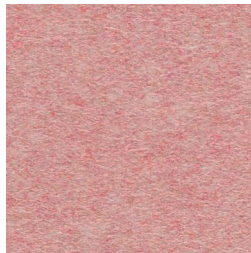


[magisdesign.com](http://magisdesign.com)

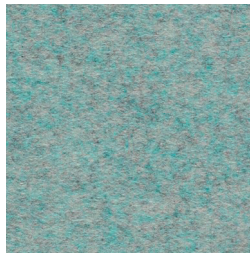
**Troy** — design Marcel Wanders  
Front cover

All versions are available with front side covered in fabric or in leather (except for the polycarbonate pattern, plywood pattern and fully covered versions).

**Kvadrat Divina**  
→



**F-095 Pink (613)**  
Divina MD



**F-224 Light Blue (813)**  
Divina MD

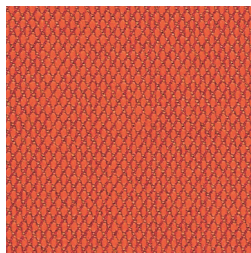


**F-356 Green (943)**  
Divina MD

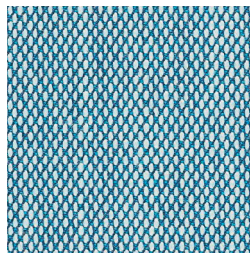


**F-512 Dark Grey  
Mélange (180)**  
Divina Mélange

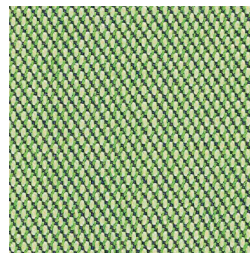
**Kvadrat Steelcut Trio**  
→



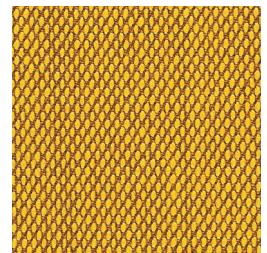
**F-088 Orange (533)**



**F-225 Light Blue (733)**

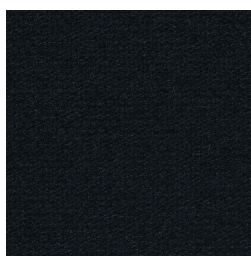


**F-357 Green (933)**



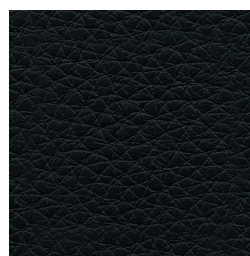
**F-578 Yellow (453)**

**Kvadrat Steelcut 2**  
→



**F-767 Black (190)**

**Magis Winter**  
→



**L-0795 Black**



[magisdesign.com](http://magisdesign.com)

The Kvadrat colour numbers are indicated in brackets next to the Magis inner colour number.  
The information included in this product sheet are based on the last data in our current  
pricelist. Magis reserves the right to modify the products without notice.

## Designer



**Marcel Wanders**

Regarded by many as an anomaly in the design world, Marcel has made it his mission to “create an environment of love, live with passion and make our most exciting dreams come true”. His work excites, provokes, and polarises, but never fails to surprise due to its ingenuity, daring and singular quest to uplift the human spirit, and entertain.

In his designs, Marcel often mixes innovative materials and techniques with references to well known historical styles and archetypes, so users can easily connect to the pieces, enjoying them for a long time and in doing so create sustainable surroundings.

Marcel’s chief concern is to bring the human

touch back to design, ushering in what he calls design’s ‘new age;’ in which designer, craftsperson and user are reunited.

